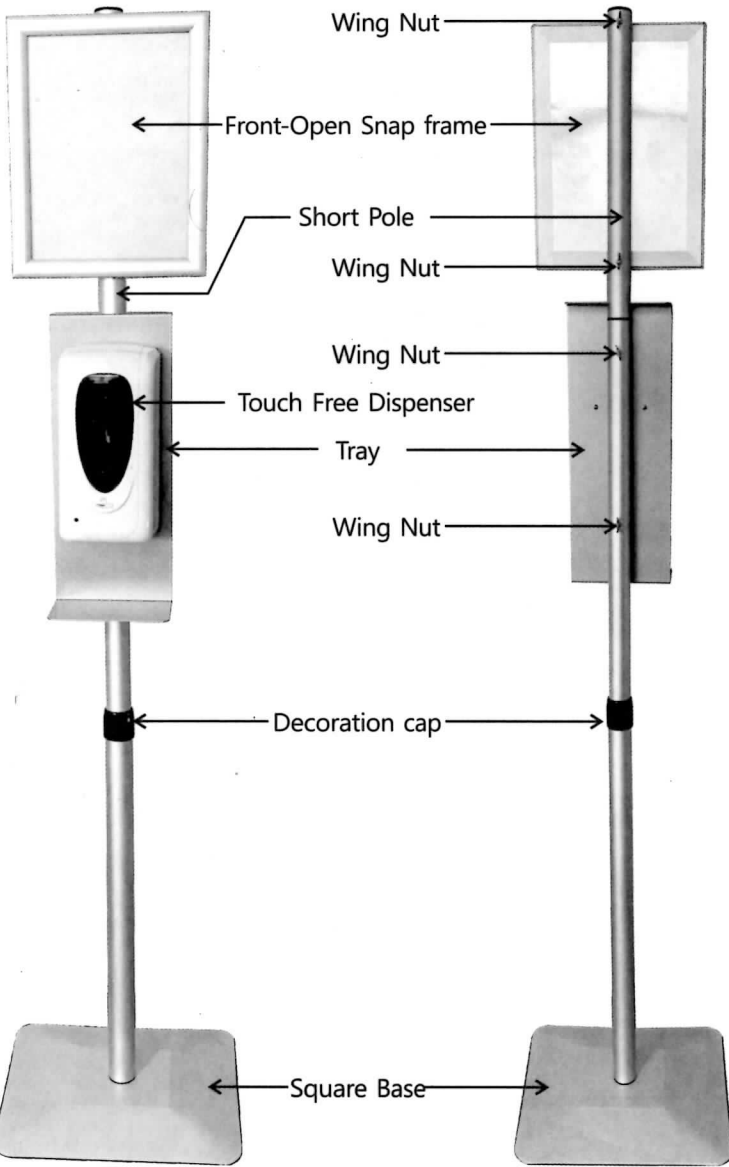
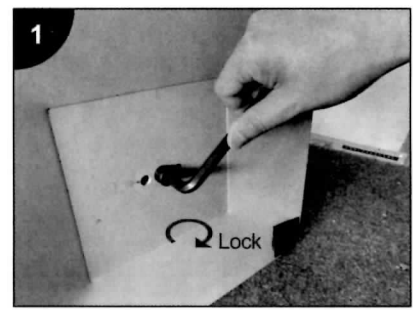


# ASSEMBLY INSTRUCTIONS

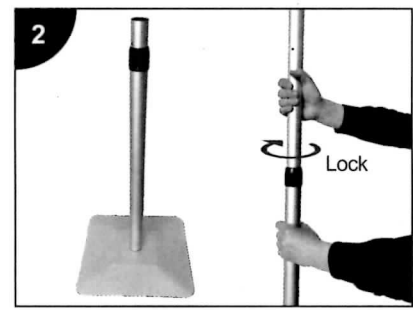


Front View

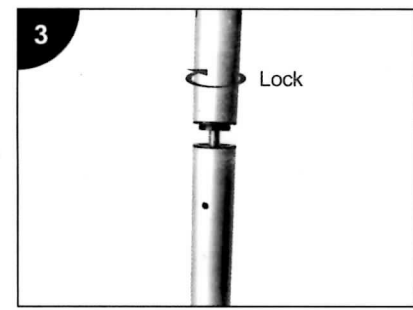
Back View



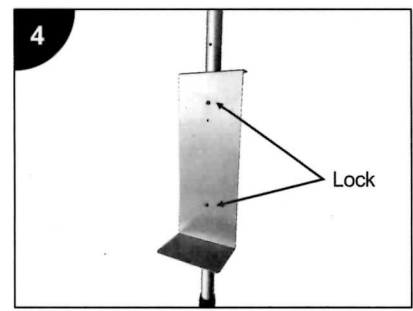
1 Use Allen key to fix the pole on the base



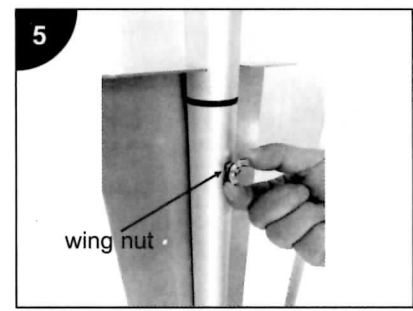
2 Rotate the upper pole to adjust the height



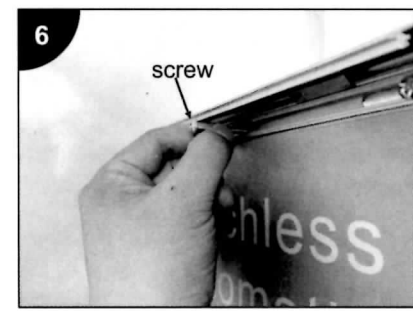
3 Fix short pole on top



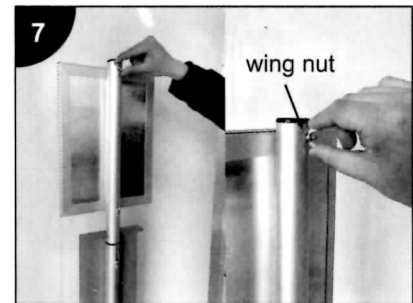
4 Mount the tray on the pole, Use screw pass through tray and pole in sequence



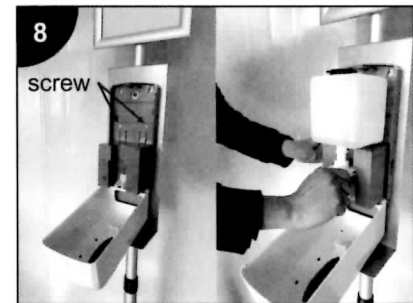
5 Tighten with wing nut at the back side



6 Mount the snap frame on the pole, Use screw pass through frame and pole in sequence



7 Tighten with wing nut at the back side



8 Use screws to fix the dispenser on the tray